

M
MERCUREY
FRANCE

NOTRE SAVOIR-FAIRE
COMMENCE DÈS LA FORÊT

*Our wood expertise applied to larger
format barrels*

Introducing our
900L and 1200L
range

Built to last

Launch VINTAGE 2024

900L and 1200L range

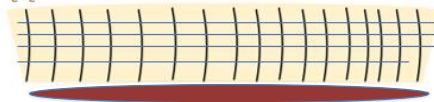
It all starts with the wood

At Tonnellerie de Mercurey it all starts with our high quality wood. The new larger format barrels represent many years of trials to perfect this size barrel and we are pleased to be able to offer them for the 2024 vintage.

The attention to detail and perfectionism of the team at Tonellerie de Mercurey ensures that we are only producing these barrels from hand split logs. This in turn ensures the quality of the seasoning and the barrels are at the highest standards.

Why we prefer split staves

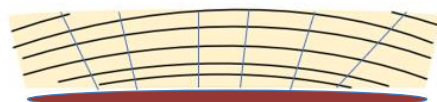
The traditional ways are often the best and hand splitting following the natural fibers of the trees ensures we avoid leakage spots and assure the maximum contact of growth rings with the wine to maximise extractions and micro oxygenation.



Wine

A split stave will have all the rings at 90° of the inner and outer faces of the stave multiplying extraction and micro oxygen

Competitors



Wine

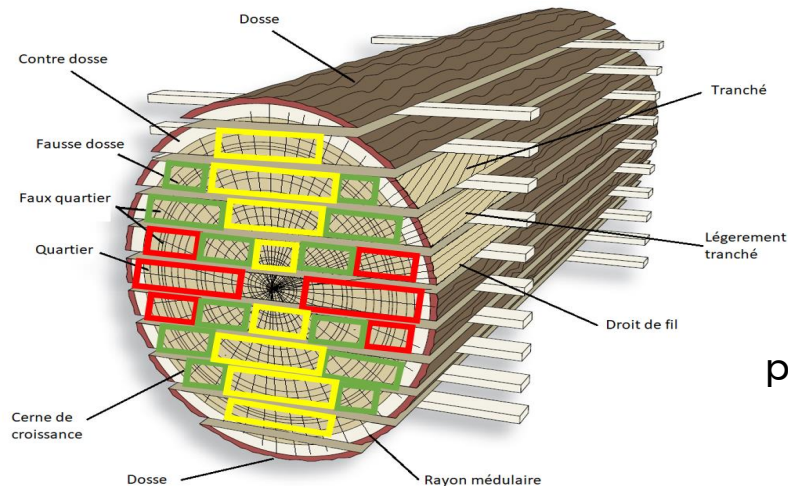
50% of the boule sawn stave will have all the rings at +/- 180° of the inner and outer faces reducing the efficiency of the exchange

900L and 1200L range



*Tonnellerie de Mercurey
is 100% hand split staves*

100% Quartier



Stave sawing by machine
produces uneven results and
reduces the quality of the
wood and the barrel.

900L and 1200L range

100 % Split Merrain =

- Hand crafted to the highest standards
- Better seasoning and air drying
- Better micro oxygenation and molecular extraction

Steam Bending =

- Minimising long term risk of cracks
- Reducing Impact of oak

TM's 900L and 1200L Wood and Toasting =

- Crafted for the long term





Elevage Pack

- Oak Stand
- 50mm Bung Hole
- Bottom stainless steel drain



Elevage Pack Plus

Elevage pack, with:

- Port Drain with Elbow
- Ball valve Macon or DIN 40mm



Elevage Premium Pack

Elevage Plus pack with:

- Stainless Steel Mid Head door
- Tasting valve
- Thermometer
- Racking port ball valve on head



Other options available on request

hydraulic bung, stainless steel door instead of a bung etc...:

Contact us:

info@mercurey.com.au

03 97301439

Nadège Carson 0419580943

	900L	1200L
Total Length	1500 mm	1510 mm
Total Width	1140 mm	1305 mm
Total Height	1455 mm	1610 mm
Weight	200 kg	250 kg